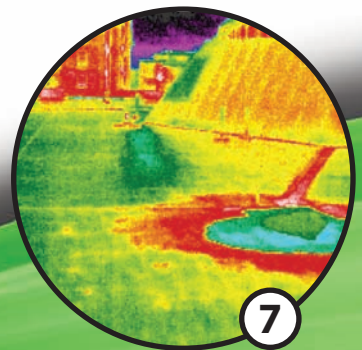
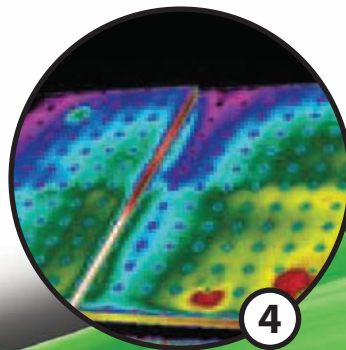
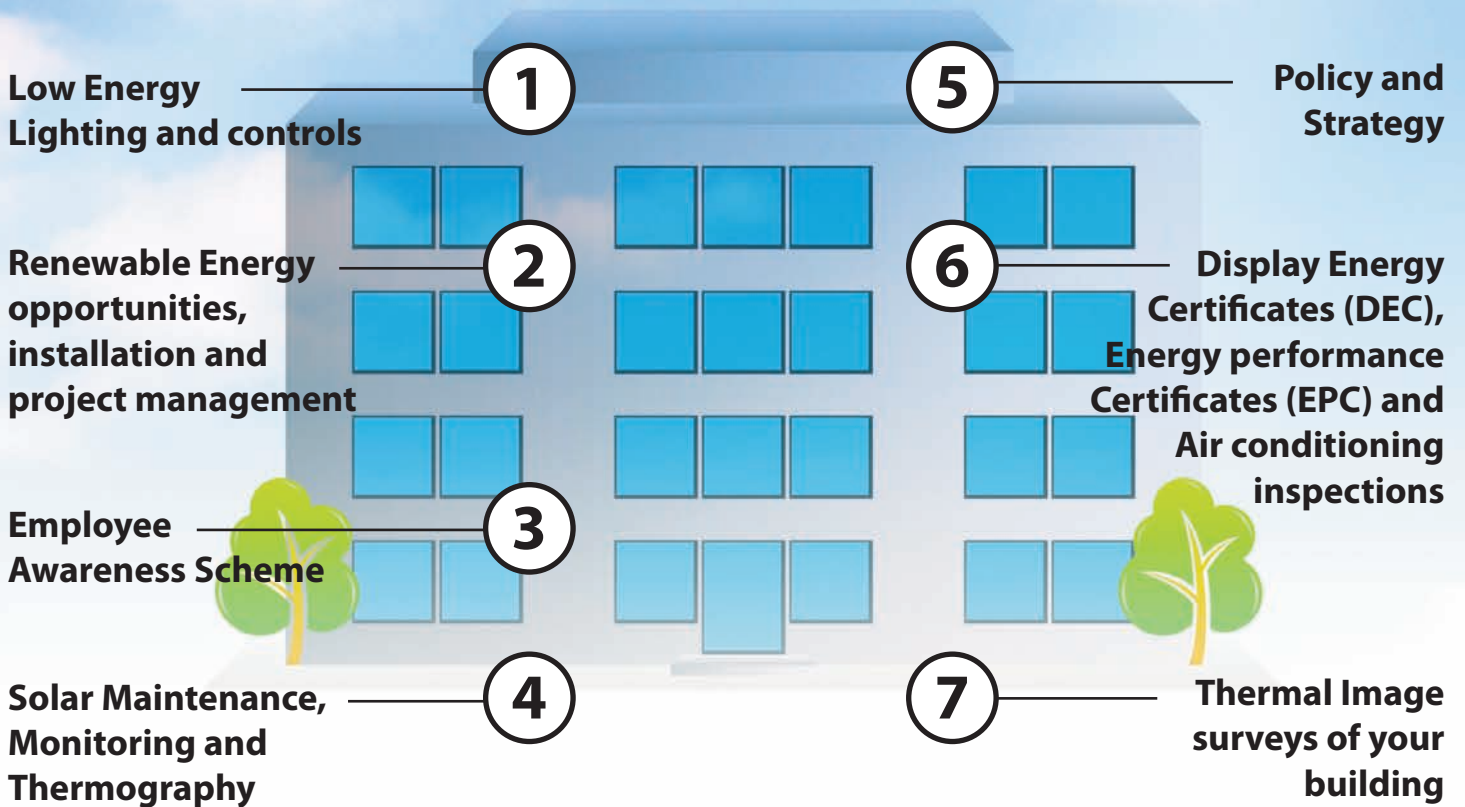


Would you like to...

...reduce energy costs?

...reduce your carbon footprint?



Onsite Renewables explained...

Here are some ways that we can help your site to be more energy efficient and reduce your carbon footprint...

1 Low Energy Lighting and Controls

If you have fluorescent lights in your building, our adapters will save you up to 50% on your energy bill. Adding movement PIRs and daylight sensors as well can reduce your energy consumption by up to 75%.

You'll benefit from;

- ✓ Better light
- ✓ 50% - 75% energy savings
- ✓ Lower heat output, longevity in existing fittings

2 Renewable Energy Opportunities, Installation and Project Management

As independent renewable energy specialists, we're able to provide you with an objective review of your energy use. Our audits will highlight ways for you to reduce your energy usage, indicative costs for those activities (where necessary), and the projected paybacks and carbon savings.

Once we've recommended the most appropriate renewable energy solutions for your building, we're able to fit and supply the full range, including; Solar PV, Solar Thermal, Heat Pumps, Wind Turbines, Biomass and CHP. We can also provide you with a range of tools to enable you to monitor and control your energy usage.

3 Employee Awareness Schemes

Engaging all levels of staff within your organisation will bring quantifiable savings and boost staff morale. Our programme of workshops, DVDs and presentations would help awareness and typically save a minimum of 5% in carbon, utilities and waste.

4 Solar Maintenance, Monitoring and Thermography

We provide a maintenance package designed to ensure your solar panels are fully optimised. Solar panel monitoring enables you to remotely investigate individual panels to evaluate productivity and will provide you with real time measurements as well as potential issues. Solar Panel thermal imagery unobtrusively checks for panel defects and degegradation.

5 Policy and Strategy

We can help you to develop an Energy Performance policy, including a low carbon strategy. This policy will demonstrate to staff and visitors that your organisation is dedicated to energy efficiency.

A strategy and implementation plan identifies a range of initiatives that could reduce energy and carbon consumption across your estate. It includes indicative costs, paybacks and carbon savings of most of the major technologies.

6 Energy Certificates (DEC), Energy Performance Certificates (EPC) and air-conditioning inspections

To help you comply with government building regulations, we can undertake EPCs, DEC's and air-conditioning Surveys. Aside from being mandatory for certain building types and usages, these surveys will also identify energy savings.

7 Thermal image building surveys (Oct - April only)

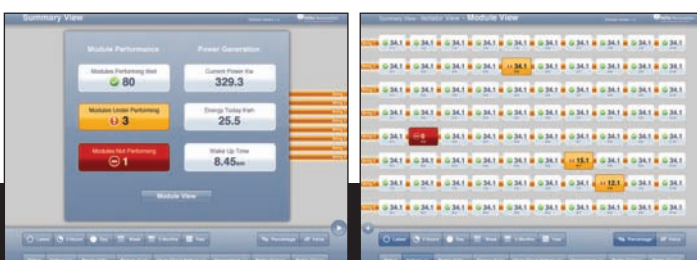
Thermal imaging can identify insufficient or missing insulation in your roof and external walls. It can effectively detect building and/or design faults, and locate leaks in your plumbing and heating systems that might lead to energy losses, highlighting any remedial work that requires attention.

Thermal imaging also provides clear images of normally invisible diagnostic evidence that can be invaluable for planning restoration or evaluating future projects. It is one of the most valuable diagnostic tools for predictive maintenance. By detecting these anomalies, we'll be able to show you what needs corrective action before costly system failures occur!

Do you want to know more?

To discuss your specific requirements or arrange a free lighting survey please call us on **01442 834700** or email contact@onsite-renewables.com

More information about our products and services can be found on our website www.onsite-renewables.com.



Onsite Renewables Ltd
Pantile Farm • Middle Lane • Bovington • HP3 0LG
01442 834 700 • www.onsite-renewables.com